

Mist Confidential. Distribution under NDA only.



BT11 Hardware Installation Guide

Overview

The Mist BT11 delivers a BLE Array AP with internal antennas that are used for BLE based location.

Mist Confidential. Distribution under NDA only.

Understanding the Product

Included in the box:

- BT11
- Mounting bracket with mounting hardware

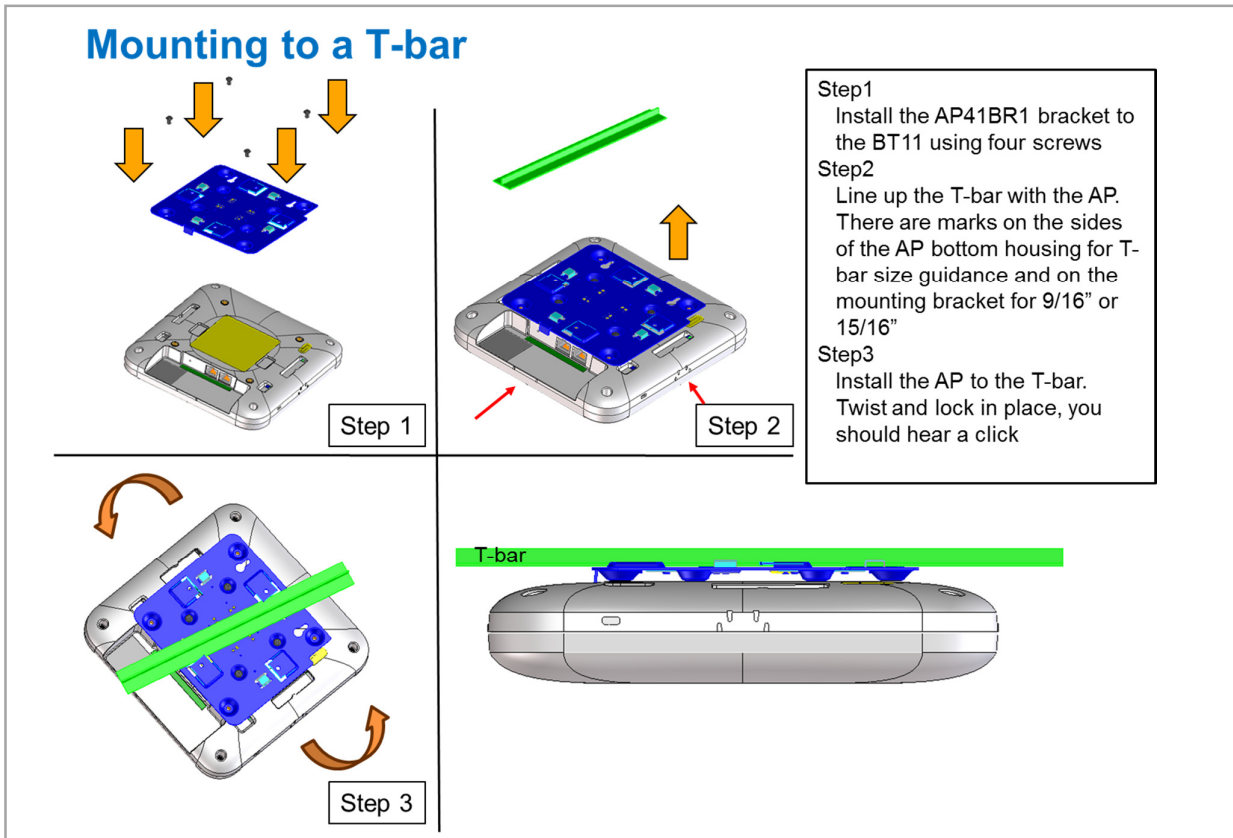
I/O ports and Kensington lock



Reset	Reset to the factory default settings
Eth1+PoE Out	10/100/1000 BaseT RJ45 interface that can output 48V PoE
Eth0+PoE In	10/100/1000 BaseT RJ45 interface that supports 802.3at PoE PD

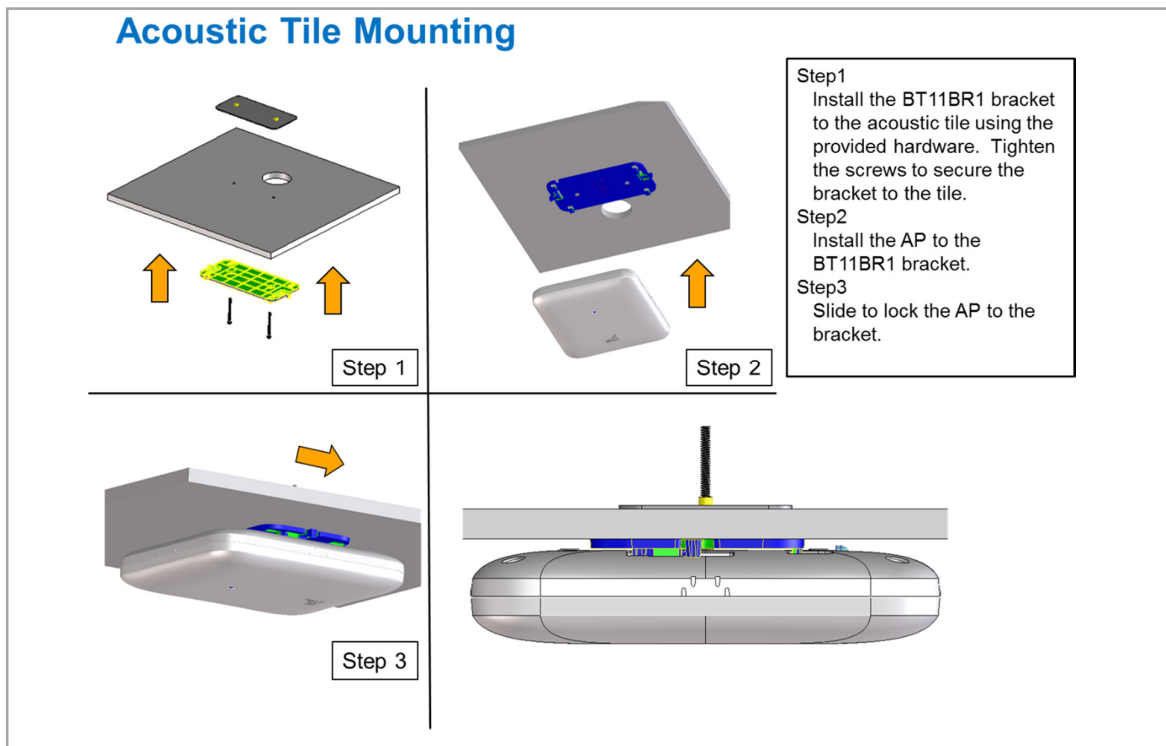
Mist Confidential. Distribution under NDA only.

Mounting kit installation



When mounting to a T-bar, please use the screws that are provided which have a head diameter of 8mm and a length of 6mm.

Mist Confidential. Distribution under NDA only.



When mounting to an acoustic ceiling tile, please use the screws that are provided which have a head diameter of 7mm and a length of 40mm.

Mist Confidential. Distribution under NDA only.

Technical Specifications:

Feature	Description
Power options	802.3at PoE
Dimensions	203mm x 203mm x 40mm (7.99in x 7.99in x 1.57in)
Weight	0.636 kg (1.4 lbs)
Operating temperature	Internal antenna 0° to 40° C
Operating humidity	10% to 90% maximum relative humidity, non-condensing
Operating altitude	3,048m (10,000 ft)
Electromagnetic emissions	FCC Part 15 Class B
I/O	1 - 10/100/1000BASE-T auto-sensing RJ-45 with PoE In 1 - 10/100/1000BASE-T auto-sensing RJ-45 with 48Vdc PoE Out
RF	2.4GHz BLE with Dynamic Antenna Array
Indicators	Multi-color status LED
Compliance standards	UL 60950-1 CAN/CSA-C22.2 No. 60950-1 UL 2043 FCC Part 15.247, 15.407, 15.107, and 15.109 RSS-247 ICES-003 (Canada)

The unit and all interconnected equipment must be installed indoors within the same building, including all PoE-powered network connections as described by Environment A of the IEEE 802.3af standard.

Suitable for use in environmental air space in accordance with Section 300-22(C) of the National Electrical Code, and Sections 2-128, 12-010(3), and 12-100 of the Canadian Electrical Code, Part 1, CSA C22.1.

Warranty Information

The BT11 family of Access Points comes with a limited lifetime warranty.

Mist Confidential. Distribution under NDA only.

Ordering Information:

Access Points

BT11-US	BLE Array AP with internal antennas for the US Regulatory domain

Mounting brackets

AP41BR1	Premium AP T-bar ceiling mounting bracket kit
BT11BR1	BLE Array AP mounting bracket kit

Mist Confidential. Distribution under NDA only.

Regulatory Compliance Information:

This product and all interconnected equipment must be installed indoors within the same building, including the associated LAN connections as defined by the 802.3at Standard.

FCC Requirement for Operation in the United States of America:

FCC Guideline for Human Exposure

This equipment complies with FCC radiation exposure limits set forth for an uncontrolled environment. This equipment should be installed and operated with minimum distance 20cm between the radiator & your body.

This device complies with Part 15 of the FCC Rules. Operation is subject to the following two conditions: (1) This device may not cause harmful interference, and (2) this device must accept any interference received, including interference that may cause undesired operation.

This equipment has been tested and found to comply with the limits for a Class B digital device, pursuant to Part 15 of the FCC Rules. These limits are designed to provide reasonable protection against harmful interference in a residential installation. This equipment generates, uses and can radiate radio frequency energy and, if not installed and used in accordance with the instructions, may cause harmful interference to radio communications. However, there is no guarantee that interference will not occur in a particular installation. If this equipment does cause harmful interference to radio or television reception, which can be determined by turning the equipment off and on, the user is encouraged to try to correct the interference by one of the following measures:

- Reorient or relocate the receiving antenna.
- Increase the separation between the equipment and receiver.
- Connect the equipment into an outlet on a circuit different from that to which the receiver is connected.
- Consult the dealer or an experienced radio/TV technician for help.

FCC Caution

- Any changes or modifications not expressly approved by the party responsible for compliance could void the user's authority to operate this equipment.

Mist Confidential. Distribution under NDA only.

- This transmitter must not be co-located or operating in conjunction with any other antenna or transmitter.

Industry Canada

This device complies with ISED's license-exempt RSS's. Operation is subject to the following two conditions: (1) This device may not cause harmful interference, and (2) this device must accept any interference received, including interference that may cause undesired operation.

Le présent appareil est conforme aux CNR d'ISED applicables aux appareils radio exempts de licence. L'exploitation est autorisée aux deux conditions suivantes : (1) le dispositif ne doit pas produire de brouillage préjudiciable, et (2) ce dispositif doit accepter tout brouillage reçu, y compris un brouillage susceptible de provoquer un fonctionnement indésirable.

Radiation Exposure Statement:

This equipment complies with ISED radiation exposure limits set forth for an uncontrolled environment. This equipment should be installed and operated with minimum distance 20cm between the radiator & your body.

Déclaration d'exposition aux radiations: Cet équipement est conforme aux limites d'exposition aux rayonnements ISED établies pour un environnement non contrôlé. Cet équipement doit être installé et utilisé avec un minimum de 20 cm de distance entre la source de rayonnement et votre corps.